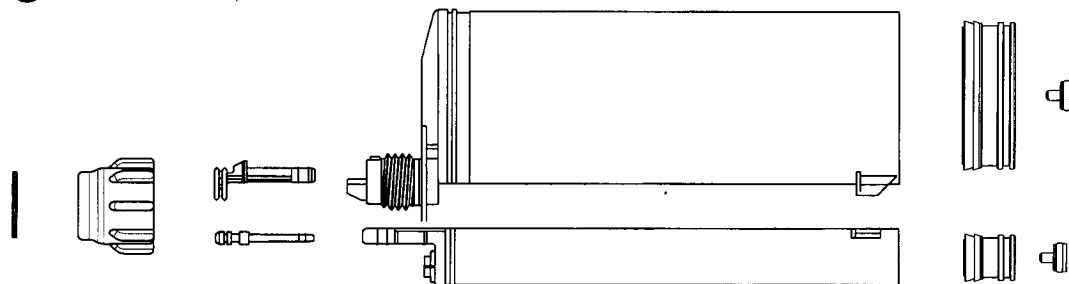


Cartridge 490 ml, 10:1



* Data is subject to change without prior notice.

Item	Part Number	Description	Material	Parts per Unit	
				Box	Bag
Cartridge	CA 400-10-14	Cartridge A, 490 ml, 10:1	PP natural	200	-
	CB 400-10-14	Cartridge B, 490 ml, 10:1	PP natural	200	-
	CA 401-10-18	Cartridge A, 490 ml, 10:1	PA6 natural	200	-
	CB 401-10-18	Cartridge B, 490 ml, 10:1	PA6 natural	200	-
Piston	PA 420-10-11	Piston A with Lip, 400 ml, 10:1	PP-CP natural	400	-
	PB 420-10-11	Piston B with Lip, 400 ml, 10:1	PP-CP natural	4'000	-
	PA 421-10-28	Piston A with Lip, 400 ml, 10:1	PA6 grey	400	-
	PB 421-10-28	Piston B with Lip, 400 ml, 10:1	PA6 grey	4'000	-
Piston Plug	PP 001-21	Piston Plug	LD-PE green	30'000	5'000
Nose Plug	SA 402-10-23	Nose Plug A, 10:1	LD-PE green	5'000	-
	SB 402-10-23	Nose Plug B, 10:1	LD-PE green	25'000	5'000
	SA 402-10-24	Nose Plug A, 10:1	PA6 grey	5'000	-
	SB 402-10-24	Nose Plug B, 10:1	PA6 grey	25'000	5'000
Retaining Nut	UM 13-PP	Retaining Nut	PP natural	3'000	-
Removal Disc	RD 001-00	Removal Disc for Nose Plug	Steel	12'000	2'000